

Interiors

2023



SPECTRUM
CREATING HEALTHIER ENVIRONMENTS

SELECTED PROJECTS

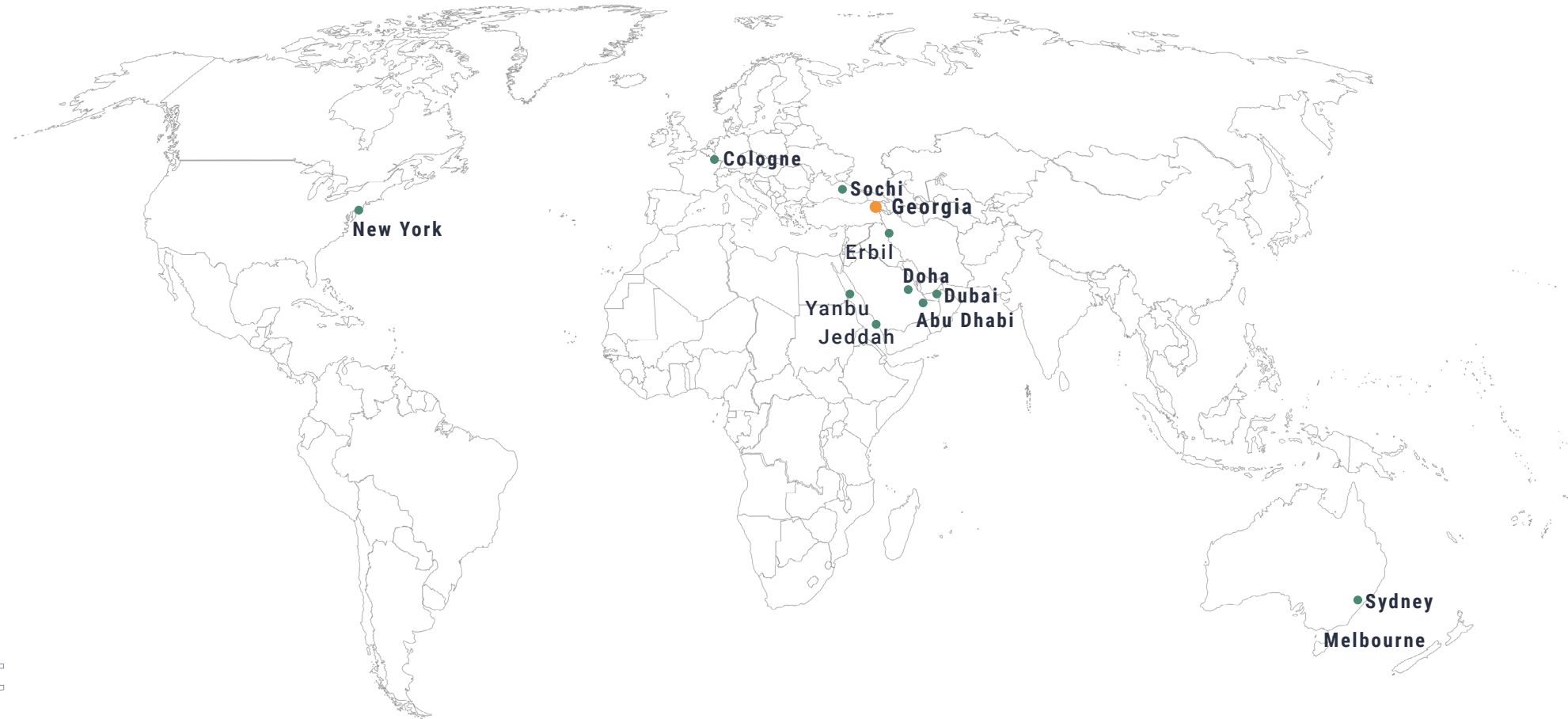
COMMITTED TO CREATING HEALTHIER ENVIRONMENTS

Spectrum is a fully integrated Design Build firm based in Tbilisi, Georgia, operating globally and providing the following services: Architecture, Interior Design, Master Planning and Construction Management. We design and build unique and bespoke projects for commercial and residential sectors around the world.

SPECTRUM

Think future

Worldwide destinations



01/08

architecture

02/08

interior design

03/08

master planning

04/08

construction management

05/08

construction

06/08

procurement planning

07/08

energy audit

08/08

biophilic design

70+ Innovative solutions

4+ International awards

45+ Qualified employees



01 Next Collection
Batumi, Georgia



02 Hilton Apartments
Batumi, Georgia



03 Dubai Towers
Dubai, United Arab Emirates



04 The Emerald
Al Reem Island, Abu Dhabi,
UAE



05 Next Address
Batumi, Georgia

01

NEXT COLLECTION

Batumi, Georgia

The design vision for the hotel directly relates to the neighborhood the project is located in. The Canopy approach to guest experience was transmitted into the design elements, enriching with cultural vibrancy, ensuring a unique and memorable guest stay. The design methodology takes into consideration the characteristics of different guest types and delivers individual spaces, where each and every guest can Find a Home Away From Home!



FEEL THE BREEZE OF
THE BLACK SEA
RIVIERA

INTERIORS

The location and surroundings drive design and environmental decisions. The lobby area full of ample sunlight, at night acts as a streetlamp giving out the energy and welcoming atmosphere. Carefully selected color pallets, materials and bespoke furniture create an atmosphere to define a positive stay! A sophisticated palette of natural materials creates a relaxing and soothing atmosphere, articulated by greenish folding doors with eyecatching colorful stained glass accents. for gatherings.

FACTS & FIGURES

Area **8000 m²**

Number of Storeys **6**

Height **24 m**

Services **Interior Design,
Construction Management**

Status **Ongoing**



While most of the architectural elements of the old building are lost, in recognition of its history and to remind visitors that they are in the historical building, the feeling of the old facade was transmitted to the inner side of the facade wall and so that it resembles the

old style of the original building. Based on the Latest Architecture of record, tried to find a balance between architectural solutions and material selection for the facade. With the aim to find practical solutions for balconies, roof deck, roof itself, the skylight, and the main entrance, we achieved a very sophisticated and refined appearance

THE NEW HUB OF LIFE IS CREATED

A sophisticated palette of natural materials create relaxing and soothing atmosphere, articulated by greenish folding doors with eye-catching colorful stained glass accents. The combination of brick, wood, colorful glass, blue velvet and greenish wood is set to create memorable and favorable space for gatherings.

**GATHERINGS-SOCIAL
AND INTIMATE**

02

HILTON APARTMENTS

Batumi, Georgia

The design vision for the hotel directly relates to the neighborhood the project is located in. The Canopy approach to guest experience was transmitted into the design elements, enriching with cultural vibrancy, ensuring a unique and memorable guest stay. The design methodology takes into consideration the characteristics of different guest types and delivers individual spaces, where each and every guest can Find a Home Away From Home!



INTERIORS

The location and surroundings drive design and environmental decisions. The lobby area full of ample sunlight, at night acts as a streetlamp giving out the energy and welcoming atmosphere. Carefully selected color pallets, materials and bespoke furniture create an atmosphere to define a positive stay! A sophisticated palette of natural materials creates a relaxing and soothing atmosphere, articulated by greenish folding doors with eye-catching colorful stained glass accents. for gatherings.

FACTS & FIGURES

Area **8000 m²**

Number of Storeys **6**

Height **24 m**

Services **Interior Design,
Construction Management**

Status **Ongoing**



While most of the architectural elements of the old building are lost, in recognition of its history and to remind visitors that they are in the historical building, the feeling of the old facade was transmitted to the inner side of the facade wall and so that it resembles the

old style of the original building. Based on the Latest Architecture of record, tried to find a balance between architectural solutions and material selection for the facade. With the aim to find practical solutions for balconies, roof deck, roof itself, the skylight, and the main entrance, we achieved a very sophisticated and refined appearance

MODERN ARCHITECTURAL TRENDS MEET HAMPTON STYLE

The design leverages the latest design trends, meets the evolving guest needs, and positions the for continuous future relevancy. A palette of honest, natural and warm materials used to create a tranquil and memorable space, the place you want to keep coming back to. Clean lines, thoughtful use of space and contextual elements are set to deliver memorable guest stay and quality experience.

ARTISTIC SURROUNDINGS
PROMOTE INSPIRATION AND
CREATIVITY

03

DUBAI TOWERS

Dubai, United Arab Emirates

The design vision for the hotel directly relates to the neighborhood the project is located in. The Canopy approach to guest experience was transmitted into the design elements, enriching with cultural vibrancy, ensuring a unique and memorable guest stay. The design methodology takes into consideration the characteristics of different guest types and delivers individual spaces, where each and every guest can Find a Home Away From Home!



INTERIORS

The location and surroundings drive design and environmental decisions. The lobby area full of ample sunlight, at night acts as a streetlamp giving out the energy and welcoming atmosphere. Carefully selected color palettes, materials and bespoke furniture create an atmosphere to define a positive stay! A sophisticated palette of natural materials creates a relaxing and soothing atmosphere, articulated by greenish folding doors with eye-catching colorful stained glass accents. for gatherings.

FACTS & FIGURES

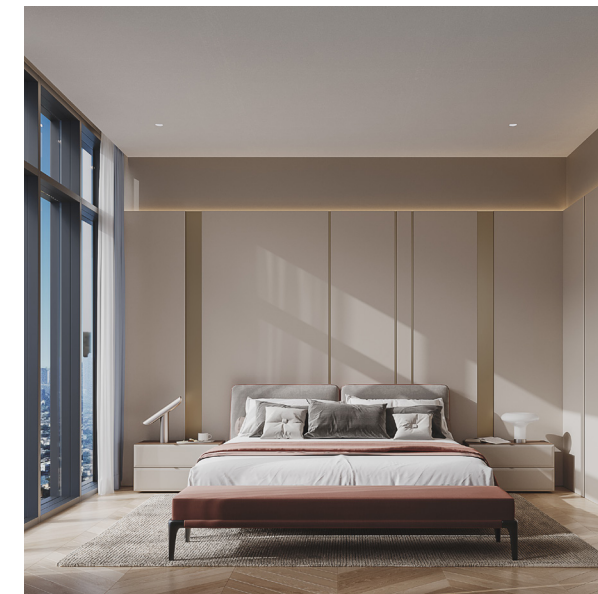
Area **8000 m²**

Number of Storeys **6**

Height **24 m**

Services **Interior Design,
Construction Management**

Status **Ongoing**



While most of the architectural elements of the old building are lost, in recognition of its history and to remind visitors that they are in the historical building, the feeling of the old facade was transmitted to the inner side of the facade wall and so that it resembles the

old style of the original building. Based on the Latest Architecture of record, tried to find a balance between architectural solutions and material selection for the facade. With the aim to find practical solutions for balconies, roof deck, roof itself, the skylight, and the main entrance, we achieved a very sophisticated and refined appearance

TRANSFERRING COASTAL AESTHETICS TO THE INTERIORS

Natural and warm materials inspired by coastal aesthetics is used to create a trendy and memorable space. Clean lines, thoughtful use of space and contextual elements are set to deliver meaningful & memorable guest experiences. Each space is infused with stylish elements, coastal inspiration and biophilic touch. The use of materials and textures let it be different wood, marble, stone, glass and different fabrics all serve one purpose – to harmoniously interact, come in line with Radisson Blu Resort standards and form a very unique, fresh and delightful hotel experience.

**DESIGNED FOR MEMORABLE
GUEST EXPERIENCE**

04

THE EMERALD

Al Reem Island, Abu Dhabi, UAE

The design vision for the hotel directly relates to the neighborhood the project is located in. The Canopy approach to guest experience was transmitted into the design elements, enriching with cultural vibrancy, ensuring a unique and memorable guest stay. The design methodology takes into consideration the characteristics of different guest types and delivers individual spaces, where each and every guest can Find a Home Away From Home!



INTERIORS

The location and surroundings drive design and environmental decisions. The lobby area full of ample sunlight, at night acts as a streetlamp giving out the energy and welcoming atmosphere. Carefully selected color palettes, materials and bespoke furniture create an atmosphere to define a positive stay! A sophisticated palette of natural materials creates a relaxing and soothing atmosphere, articulated by greenish folding doors with eye-catching colorful stained glass accents. for gatherings.

FACTS & FIGURES

Area **8000 m²**

Number of Storeys **6**

Height **24 m**

Services **Interior Design,
Construction Management**

Status **Ongoing**



While most of the architectural elements of the old building are lost, in recognition of its history and to remind visitors that they are in the historical building, the feeling of the old facade was transmitted to the inner side of the facade wall and so that it resembles the

old style of the original building. Based on the Latest Architecture of record, tried to find a balance between architectural solutions and material selection for the facade. With the aim to find practical solutions for balconies, roof deck, roof itself, the skylight, and the main entrance, we achieved a very sophisticated and refined appearance

EXCEPTIONAL ELEGANCE

The design takes the notion of the color psychology, setting the ground for a serene, neutral color scheme that is in line with the hotel architecture, and leaves space for creativity. Careful consideration of each and every element of the interior design alongside bespoke furniture and accessories is what adds special charm and original apparel to every space.

**PERFECTION DELIVERED
IN DETAILS**

05

NEXT ADDRESS

Batumi, Georgia

The design vision for the hotel directly relates to the neighborhood the project is located in. The Canopy approach to guest experience was transmitted into the design elements, enriching with cultural vibrancy, ensuring a unique and memorable guest stay. The design methodology takes into consideration the characteristics of different guest types and delivers individual spaces, where each and every guest can Find a Home Away From Home!



INTERIORS

The location and surroundings drive design and environmental decisions. The lobby area full of ample sunlight, at night acts as a streetlamp giving out the energy and welcoming atmosphere. Carefully selected color palettes, materials and bespoke furniture create an atmosphere to define a positive stay! A sophisticated palette of natural materials creates a relaxing and soothing atmosphere, articulated by greenish folding doors with eye-catching colorful stained glass accents. for gatherings.

FACTS & FIGURES

Area **8000 m²**

Number of Storeys **6**

Height **24 m**

Services **Interior Design,
Construction Management**

Status **Ongoing**



While most of the architectural elements of the old building are lost, in recognition of its history and to remind visitors that they are in the historical building, the feeling of the old facade was transmitted to the inner side of the facade wall and so that it resembles the

old style of the original building. Based on the Latest Architecture of record, tried to find a balance between architectural solutions and material selection for the facade. With the aim to find practical solutions for balconies, roof deck, roof itself, the skylight, and the main entrance, we achieved a very sophisticated and refined appearance

EXCEPTIONAL ELEGANCE

The design takes the notion of the color psychology, setting the ground for a serene, neutral color scheme that is in line with the hotel architecture, and leaves space for creativity. Careful consideration of each and every element of the interior design alongside bespoke furniture and accessories is what adds special charm and original appeal to every space.

**PERFECTION DELIVERED
IN DETAILS**



06 Canopy by Hilton
Tbilisi, Georgia



07 Radisson Collection
Sochi, Russia



08 Radisson Blu
Gonio, Georgia



09 Hampton Inn
Batumi, Georgia



10 Villa Godoly
Kakheti, Georgia

06

CANOPY BY HILTON

Tbilisi, Georgia

The design vision for the hotel directly relates to the neighborhood the project is located in. The Canopy approach to guest experience was transmitted into the design elements, enriching with cultural vibrancy, ensuring a unique and memorable guest stay. The design methodology takes into consideration the characteristics of different guest types and delivers individual spaces, where each and every guest can Find a Home Away From Home!



INTERIORS

The location and surroundings drive design and environmental decisions. The lobby area full of ample sunlight, at night acts as a streetlamp giving out the energy and welcoming atmosphere. Carefully selected color pallets, materials and bespoke furniture create an atmosphere to define a positive stay! A sophisticated palette of natural materials creates a relaxing and soothing atmosphere, articulated by greenish folding doors with eye-catching colorful stained glass accents. for gatherings.

FACTS & FIGURES

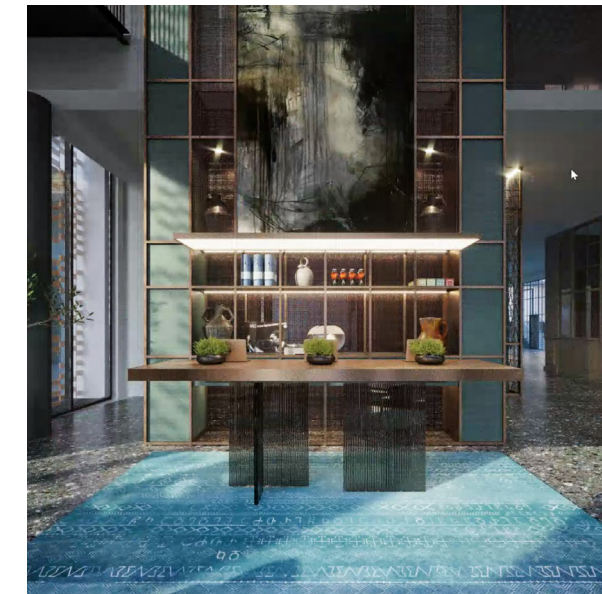
Area **8000 m²**

Number of Storeys **6**

Height **24 m**

Services **Interior Design,
Construction Management**

Status **Ongoing**



While most of the architectural elements of the old building are lost, in recognition of its history and to remind visitors that they are in the historical building, the feeling of the old facade was transmitted to the inner side of the facade wall and so that it resembles the

old style of the original building. Based on the Latest Architecture of record, tried to find a balance between architectural solutions and material selection for the facade. With the aim to find practical solutions for balconies, roof deck, roof itself, the skylight, and the main entrance, we achieved a very sophisticated and refined appearance

THE NEW HUB OF LIFE IS CREATED

A sophisticated palette of natural materials create relaxing and soothing atmosphere, articulated by greenish folding doors with eye-catching colorful stained glass accents. The combination of brick, wood, colorful glass, blue velvet and greenish wood is set to create memorable and favorable space for gatherings.

**GATHERINGS-SOCIAL
AND INTIMATE**

07

RADISSON COLLECTION

Sochi, Russia

Radisson Collection Sochi is located on the territory of the Krasmashevsky sanatorium, a unique complex on the Black Sea Riviera, in the center of Sochi. The design aims to deliver a timeless style, while guaranteeing comfort and convenience for guests regardless the purpose of their stay. The look and feel of affordable luxury, modern elegance, laconic minimalisms will be delivered by selection of natural forms and materials, creating a timeless ambiance.



FEEL THE BREEZE OF
THE BLACK SEA
RIVIERA

INTERIORS

Each space is designed with careful thought for the function, practicality and the sense it should evoke. From the lobby, bar, and restaurant to bedroom suites - planning, shapes, forms, textures and color pallets all support the intention to deliver a proper sense of place; A place where premium lifestyle meets sophistication, areas with authentic local influence supporting the vibrant social scene and memorable experiences. The elegant and adaptable public spaces represent a free flow that seamlessly transforms into one to another.

FACTS & FIGURES

Area **18000 m²**
Number of Storeys **9**
Height **34 m**
Services **Interior design**
Status **Ongoing**



While considering Radisson Collection standards, the layout is offered with the careful thought about the guest's comfort and their memorable

experience. Every piece of furniture, accessories textures and materials are carefully selected and designed to deliver a premium lifestyle with remarkable sophistication.

EXCEPTIONAL ELEGANCE

The design takes the notion of the color psychology, setting the ground for a serene, neutral color scheme that is in line with the hotel architecture, and leaves space for creativity. Careful consideration of each and every element of the interior design alongside bespoke furniture and accessories is what adds a special charm and original apparel to every space.

**PERFECTION DELIVERED
IN DETAILS**

08

RADISSON BLU

Batumi, Georgia

Radisson Blu Resort & Residences Batumi interior design harmoniously balances the brand standards, contextual elements and the notion of creating memorable and distinguishable space. The details used in the interior design create a sophisticated and elegant environment. The aim of project is to create a design that responds to the standards of Radisson Blu and at the same time takes notion of the surrounding context.



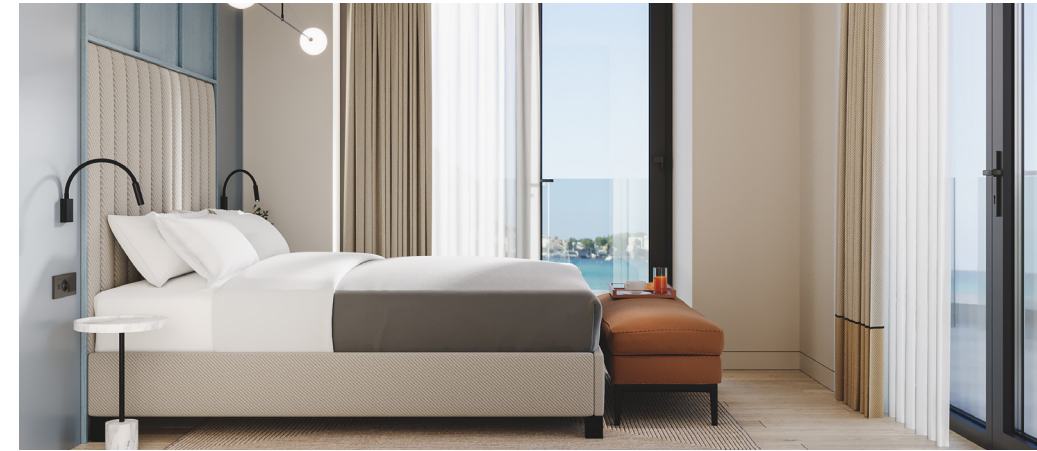
DELIGHTFULLY
COMFORTABLE
IN AND OUT

INTERIORS

Interior design of the project is characterized by a combination of classic and modern styles. All the elements - Shape, light, colour, texture, and pattern come together to create Resort aesthetics. A significant part of the interior design is the terrarium. It is one of the interesting features adding a special character to the interiors. 3 dominant colors used: white, white milk color, brown.

FACTS & FIGURES

Area **30 452 m²**
Number of Storeys **28**
Height **90m**
Services **Interior Design,**
Status **Ongoing**



Using a casual and light tone of colors encourages guests to spend time in the guestroom. The different shades of the bedroom and waiting lounge are mixed

between old and modern design. The colors of the room have been carefully selected from various architectural and historical sources and there are 3 dominant colors used: white, white milk color, brown.

TRANSFERRING COASTAL AESTHETICS TO THE INTERIORS

Natural and warm materials inspired by coastal aesthetics is used to create a trendy and memorable space. Clean lines, thoughtful use of space and contextual elements are set to deliver meaningful & memorable guest experiences. Each space is infused with stylish elements, coastal inspiration and biophilic touch. The use of materials and textures let it be different wood, marble, stone, glass and different fabrics all serve one purpose – to harmoniously interact, come in line with Radisson Blu Resort standards and form a very unique, fresh and delightful hotel experience.

**DESIGNED FOR MEMORABLE
GUEST EXPERIENCE**

HAMPTON INN

Batumi, Georgia

Hampton Inn interior design project in Batumi, Georgia intellectually incorporated coastal aesthetics into the brand guidelines and creates comfortable and memorable space for guests to enjoy. The aim was to create a design that responds to the standards of Hampton Inn and at the same time takes notion of the surrounding context. The concept supports the notion to deliver quality experience, great value and friendly service as a signature of Hampton brand philosophy.



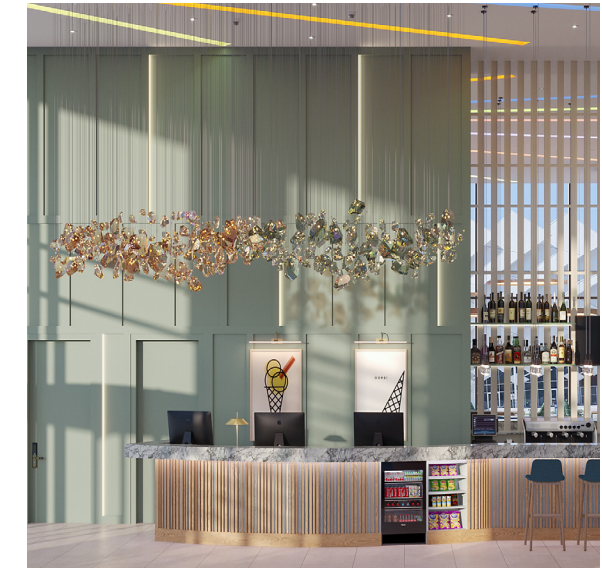
CREATING SPACES FOR
LEISURE AND
RELAXATION

INTERIORS

A modern reception and lobby provides a warm Hamptonality welcome with finishes rooted in the local environment. Welcoming entrance with customizable front desk signage providing a nod to the local area. Soothing tonal combination in line with playful print and colorful accents create fresh and comfortable aesthetics for guests to enjoy.

FACTS & FIGURES

Area **7 887 m²**
Number of Storeys **28**
Height **90 m**
Services **Interior Design,**
Status **Ongoing**



While considering brand standards, the layout is offered with the careful thought about the guest's comfort and their memorable experience.

Every piece of furniture, accessories, textures and materials are carefully selected and designed to deliver a premium lifestyle with remarkable sophistication.

MODERN ARCHITECTURAL TRENDS MEET HAMPTON STYLE

The design leverages the latest design trends, meets the evolving guest needs, and positions the for continuous future relevancy. A palette of honest, natural and warm materials used to create a tranquil and memorable space, the place you want to keep coming back to. Clean lines, thoughtful use of space and contextual elements are set to deliver memorable guest stay and quality experience.

**ARTISTIC SURROUNDINGS
PROMOTE INSPIRATION AND
CREATIVITY**

10

VILLA GODOLY

Kakheti, Georgia

The modern interpretation of ethnic style of the “Villa Godoly” hotel facade introduces Kakheti’s architecture to its visitors, which is characterized by monolithic facades, strict lines and textures. Building materials and styles were selected according to the rich cultural and historical heritage of the region.

The tower of the building is covered with cobblestone, while the horizontal and vertical brick inserts are used as details. Balconies and arches correspond to the proportions of the historic Kakhetian architecture.



CREATING UNIQUE
LOCATION WITH
AUTHENTIC TOUCH

INTERIORS

The rooms are characterised by the details of the old Georgian furniture, rugs and light-coloured walls, which accurately match with modern style and create a unique character. The hotel "Villa Godoly" project also consists of the lounge, chimney space, restaurant and waiting areas, whose overall appearance is combined with the historical and natural environment, which creates an ideal holiday destination to the visitors.

FACTS & FIGURES

Area 22 549 m²

Services Interior Design,

Architecture

Status Completed



The concept of the reception area represents the analog of the Georgian peasant's house, and suits the surrounding area with its hospitable design, thus creating cozy and exquisite

space. The elements highlighting the 8000 years of Georgian winemaking tradition are present throughout the hotel design. The walls and columns are lined with Georgian characterizing paver of bricks and stones and every bespoke elements story-tells cultural heritage of the hotel location.

THE SYNTHESIS OF OLD AND NEW

Building materials and styles of the interior were selected according to the rich cultural and historical heritage of the Kakheti region. Antique Georgian ornaments, furniture details, construction and finishing materials, that characterise this region are used in the interior, which harmoniously meets the standards of the modern hotel.

ADDING DEPTH THROUGH
CONNECTIONS
WITH ANCIENT ART



11 Radisson Collection
Sochi, Russia



12 Canopy by Hilton
Tbilisi, Georgia



13 Kalaki
Tbilisi, Georgia



14 Aviator
Gudauri, Georgia



15 Mosavali
Doha, Qatar

1 1

RADISSON COLLECTION

Sochi, Russia

The elegant and adaptable public spaces of Radisson Collection Sochi represent a free flow that seamlessly transforms into one to another. While considering Radisson Collection standards, the layout is offered with the careful thought about the guest's comfort and their memorable experience. Every piece of furniture, accessories, textures and materials are carefully selected and designed to deliver a premium lifestyle with remarkable sophistication.



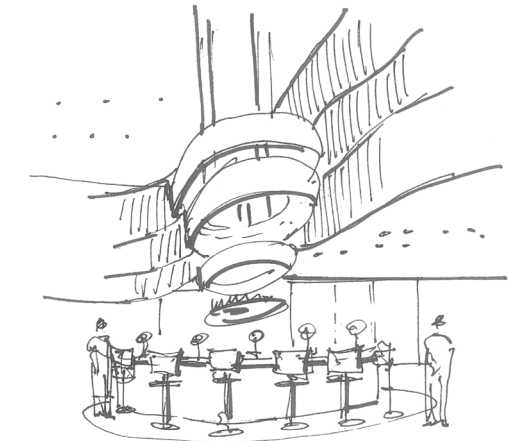
BALANCING ELEGANCE
AND UNIQUE
AESTHERICS

INTERIORS

The layout of the restaurant considers the different needs and interests of the guest therefore proposes different seating arrangements and allocations. The restaurant hosts Stoke- modern grill that positions itself as classic, reinvented; It reflects on primal cooking methods inspired by the Amazonia. The given concept was converged with Radisson Collection standards and overall design direction of the hotel to create unique ambiance that finds common language with the overall design and respond to the needs and requirements of the guests.

FACTS & FIGURES

Area **18000 m²**
Number of Storeys **9**
Height **34 m**
Services **Interior design**
Status **Ongoing**



The design takes the notion of the color psychology, setting the ground for a serene, neutral color scheme that is in line with the hotel architecture,

and leaves space for creativity. Careful consideration of each and every element of the interior design alongside bespoke furniture and accessories is what adds special charm and original apparel to every

LIVE THE EXPERIENCE

The design takes the notion of the color psychology, setting the ground for a serene, neutral color scheme that is in line with the hotel architecture, and leaves space for creativity. Careful consideration of each and every element of the interior design alongside bespoke furniture and accessories is what adds special charm and original apparel to every space.

**EVER LASTING
IMPRESSIONT**

12

CANOPY BY HILTON

Tbilisi, Georgia

The welcoming and adaptable public spaces represent a free flow that seamlessly transforms into one to another. While considering Canopy standards, each space is infused with contextual elements, neighborhood, cultural inspirations and local art. Carefully selected and designed furniture, accessories, textures and materials make all just fit together. The lobby area full of ample sunlight, at night acts as a streetlamp giving out the energy and welcoming atmosphere. Carefully selected color palettes, materials and bespoke furniture create an atmosphere to define a positive stay!



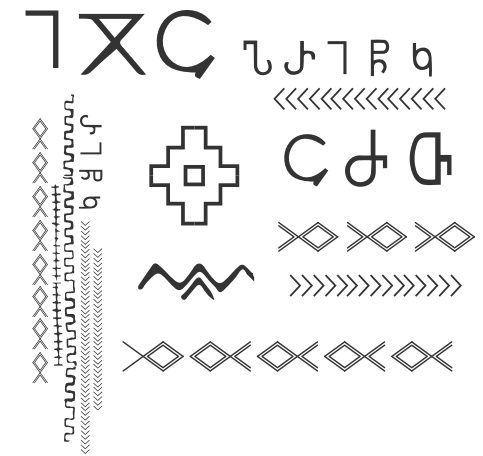
CREATING SPACES WITH FREE FLOW AND LOCAL TOUCH

INTERIORS

The bar area is presented as heart of the house, geometrically and theoretically, which can be observed from the very entrance and different angles of the hotel. From different perspectives it offers new space, new function and new experiences. Metal mesh dynamic curtains surrounding the bar add the theatricality to the space. These curtains somehow combine the four different angles and functions of the bar. Their movement enables day-clock adjustment and at different times of day showcase the functional areas.

FACTS & FIGURES

Area **8000 m²**
 Number of Storeys **6**
 Height **24 m**
 Services **Interior Design,**
Construction Management
 Status **Ongoing**



The ample sunlight brings special spirit enriched with positivity into the area of Canopy Central. The eye-catching folding doors enriched with locally

influenced stained glass patterns add special character to the area infused with local identity and the amazing reflection of colored glass guarantees unforgettable experience.

DESIGNED FOR EVENING FUN

A sophisticated palette of natural materials create relaxing and soothing atmosphere, articulated by greenish folding doors with eye-catching colorful stained glass accents. The combination of brick, wood, colorful glass, blue velvet and greenish wood is set to create memorable and favorable space for gatherings

**A STREETLAMP WITH
THE ENERGY INSIDE**

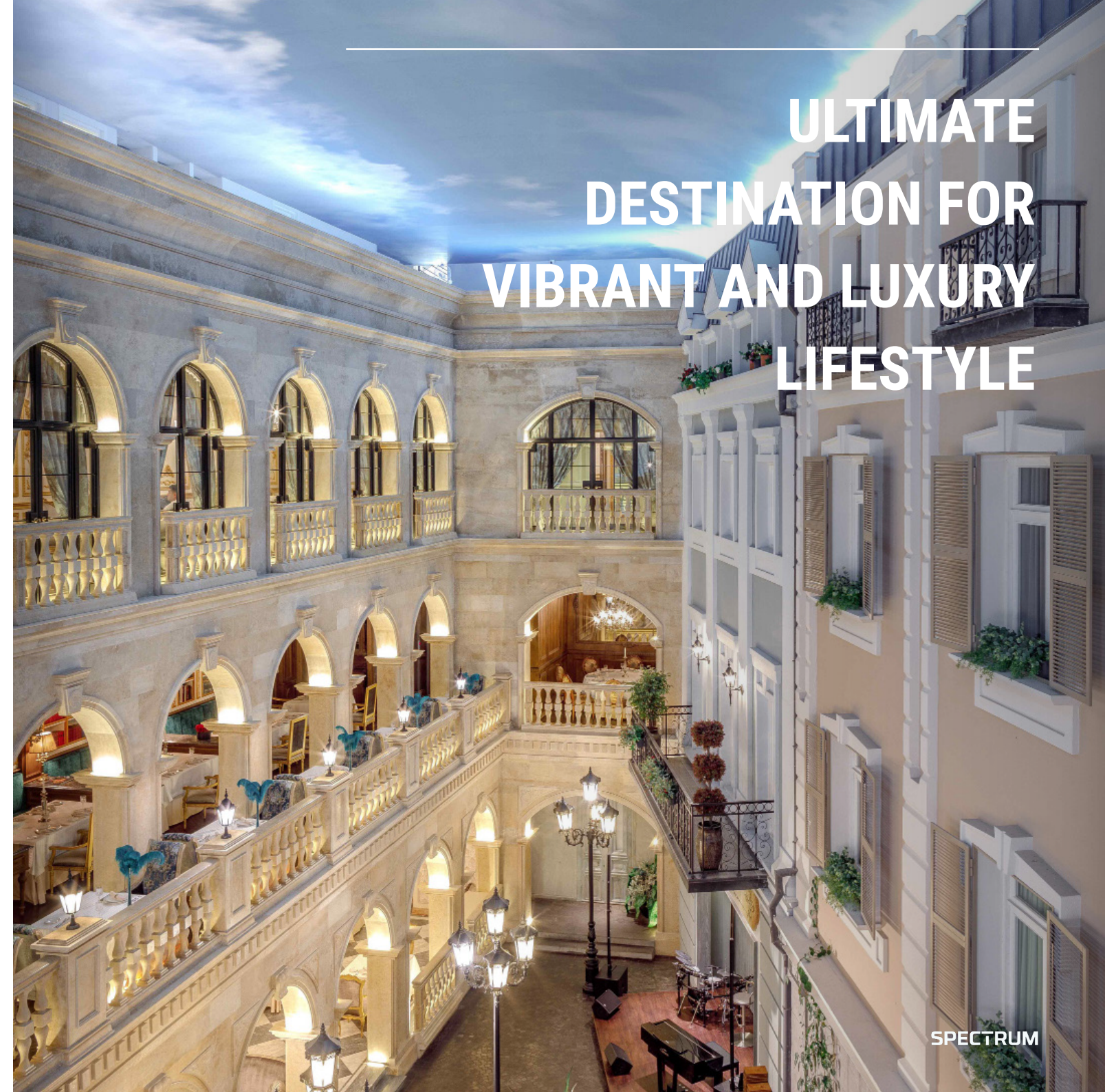
1 3

RESTAURANT "KALAKI"

Tbilisi, Georgia

One of the main aims of this project was to incorporate different architectural styles into one area while creating a unique place for special occasions. The fundamental design and concept of the project surpass the typical designation of a luxurious restaurant and its main function. It offers an unparalleled meeting space where people socialize in a magical atmosphere, allowing them to escape from hectic city life.

Combining luxurious European settings and styles with local traditions, Restaurant "Kalaki" offers an extraordinary environment for gatherings, relaxation, and communication. The restaurant provides a totally unique experience, creating unforgettable memories for its visitors.



ULTIMATE
DESTINATION FOR
VIBRANT AND LUXURY
LIFESTYLE

CONCEPT

The fundamental design and concept of the project surpass the typical designation of a luxurious restaurant and its main function. It offers an unparalleled meeting space where people socialize in a magical atmosphere, which lets them escape from hectic city life. The name of the restaurant – Kalaki, in Georgian means "city." The idea of the space is to create a city within a city with a timeless atmosphere that enables visitors to travel through space, in history and culture and interpret the reality in different lenses.

FACTS & FIGURES

Area **850 m²**

Number of Storeys **4**

Height **19m**

Services **Architecture, Interior design,
Procurement, Construction**

Status **Completed**



Combining luxurious European settings and styles with local traditions, Restaurant "Kalaki" offers an extraordinary environment for gatherings, relaxation, and communication. The restaurant provides a totally unique experience,

creating unforgettable memories for its visitors. Its story is told through classic materials, lighting, and historical context, which is purposefully imitated in the interior.

THE CITY INSIDE THE CITY

The city inside the city, where time is insignificant, is a place where you can enjoy the magical atmosphere completely distracted from stressful urban routine. It's the story told through classic materials, lighting and historical context, which is purposefully imitated in the interior.

TRAVELING WITHIN
SPACE AND TIME

14

RESTAURANT "AVIATOR"

Gudauri, Georgia

The project of the restaurant rethinks loft interior design style, connects with aviation theme and converges strict, industrial style materials united with different design approaches, in order to create a bespoke and comfortable atmosphere to dine and relax.

The restaurant belongs to the hotel – "Gudauri Loft", which is located in Georgia's winter resort – Gudauri. The project is filled with modern and sophisticated details, that make the space very unique and characteristic to its own name of "Aviator" and location.



**BALANCING
ROUGH TEXTURES AND
UNIQUE AESTHETICS**

INTERIORS

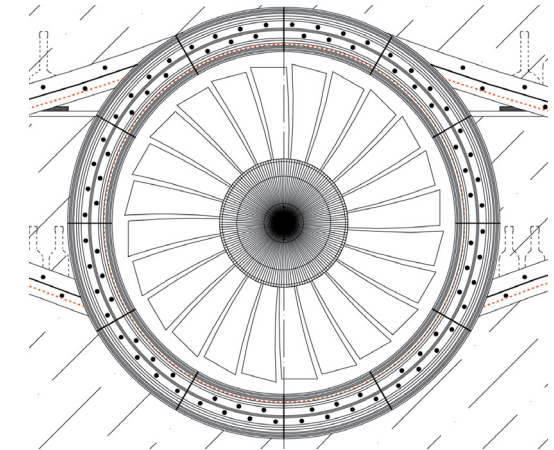
Based on several material relationships – wood, cement, brick and metal, our designers created a completely new space in the region. With a high ceiling and large, panoramic windows, lots of natural light gets in the interior space. Open space, dark tones, concrete, leather and solid wood textures create a cozy, comfortable and distinctive environment.

FACTS & FIGURES

Area 360 m²

Services Interior Design

Status Completed



Strict, minimalist and laconic interiors feature functional, vintage furniture. Handmade metal decorative partitions, concrete columns, a natural stone bar

and an original, exclusively made metal fireplace create unforgettable experiences. The harmonious combination of different architectural solutions is the main concept of this interior.

CLEAR FOR TAKE OFF

The harmonious combination of different architectural solutions is the main concept of this interior. Open space, dark tones, concrete, leather, and solid wood textures create a cozy, comfortable and distinctive environment. Strict, minimalist, and sparse interiors feature functional, vintage furniture. Decorative, handmade partitions, concrete columns, a natural stone bar and an original, exclusively made metal fireplace, create an unforgettable experience.

**WHERE LOFT AND
AVIATION MEET**

15

RESTAURANT "MOSAVALI"

Doha, Qatar

The design of the exclusive restaurant aims to present Georgian spirit, culture and traditions, therefore allures Georgia within. In the interior are presented rich wooden decorative panels for ceilings and walls, marble, metal and textile details, which come together to create a distinctive and memorable environment.

The project harmoniously combines ethnic style and comfort, while offering exclusive meeting and dining space where people socialize in a magical atmosphere. The fundamental design and concept of the project surpass the typical designation of a luxurious restaurant and its main function with the design vision based on the idea of combining the exclusive environment with cultural heritage.



UNLEASH THE
TRADITIONS AND
FLAVORS OF GEORGIA

INTERIORS

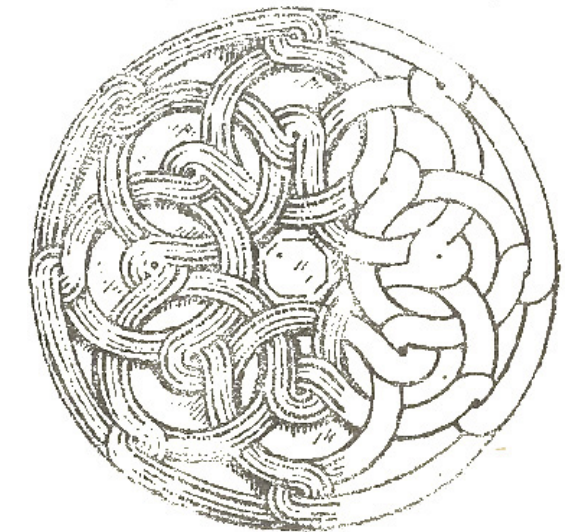
Located in the Oasis Mall in Doha, Georgian restaurant serves a purpose to create unique space wherein guests get acquainted with Georgian fusion cuisine and explore cultural heritage via design elements. Rich wooden decorative panels for ceilings and walls, marble, metal and textile details, which come together to create a distinctive and memorable environment are presented in this exclusive interior. Georgian ornaments with the variety of motives are used on the walls.

FACTS & FIGURES

Area 430 m²

Services Interior Design

Status Ongoing



Decorative partition walls give a special character to the overall design. Curved wooden ceiling with ornaments brings traditional Georgian highlights into the interior, creating special character via

the artwork of craftsmanship, that creates a special ambiance. Arched shapes are used for the bar space to bring in more traditional flavor as they are commonly found in different architectural buildings of various periods in Georgia.

FUSION RESTAURANT UNVEILING CULTURAL AESTHETICS

Each and every detail in the design approach has its story and meaning behind it. The unique features are the bespoke details, which are functional as well as aesthetically pleasant and innovative, what has a direct and indirect connection to Georgian culture, history and traditions.

AN IMMERSIVE
CULINARY EXPERIENCE



16 Private Villa
Moreton Bay, Australia



17 Private Residence
Tkhinvala, Georgia



18 Private House
Tbilisi, Georgia



19 Private Estate
Saguramo, Georgia



20 Private Apartment
Krtsanisi, Georgia

16

OCEAN VIEW RESIDENCE

Australia, Moreton Bay

The main concept behind the design of the residential house was to create a long-term residence as an architecturally pleasing, permanent home, with the opportunity to welcome guests for a comfortable stay and host large, formal events. Architecturally designed multi-level residence with wide sweeping open spaces and grand atrium takes the advantage of natural, raw finishes, spectacular views, function and practicality. Views are utilized throughout the residence.



THINKING BEYOND
THE ORDINARY

INTERIORS

The first floor of the building is divided into two wings. The Master bedroom suite is located on the North-East side and the Suites are located on North-West of the house. Both wings are connected via a sky-bridge that creates amazing places where views can be enjoyed. The living area creates flowing, airy open space. The atrium allows for additional sunlight, while the natural element presents a biophilic approach, highlighting the intention of creating the "Urban Oasis".

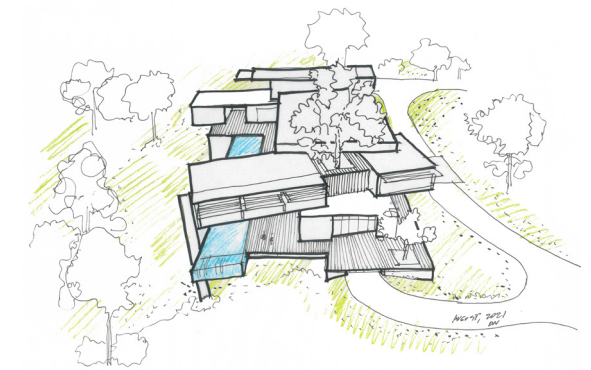
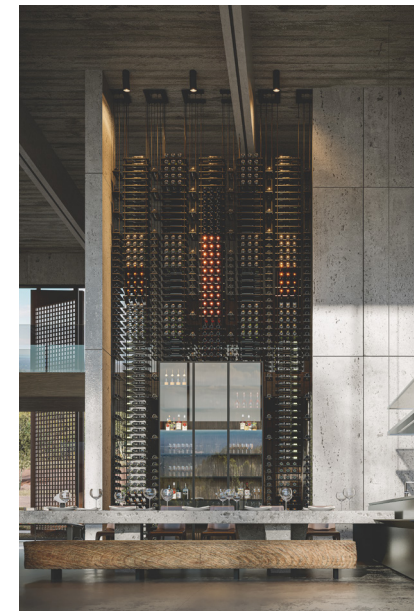
FACTS & FIGURES

Area 2 700 m²

Number of Storeys 3

Services Architecture, Interior Design

Status On going



Massive terrace overlooking mesmerizing views eliminates line between indoors and outdoors. With comfortable arrangements of furniture and sunken lounge, it promotes

spending maximum time outdoors. While ideal for family and friend gatherings, the arrangement is comfortable to host large parties and events. Preserving the existing tree and bringing nature inside is one of the interesting design elements the house features.

A PLACE THAT INSPIRES WELLNESS

Set in Nature the project rethinks our innate biological connection with nature. Considering different patterns of Biophilic design creates urban retreat for the residents. Preserving the tree and bringing nature inside is one of the interesting design elements the house features. The atrium allows for the additional sunlight, while the natural element presents biophilic approach, highlighting the intention of creating Urban Oasis.

CREATING SPACES
FOR LEISURE & RELAXATION

17

HOUSE RADIATING ELEGANCE

Tbilisi, Georgia

The interior of the house is distinguished by precious materials as well as original shapes and textures. These create a sophisticated, elegant, and harmonious environment for the residents. Exquisite details, adequate performance, and flawless elegance are present throughout this design concept.



THE GIFT OF MODERN
LUXURY

INTERIORS

Every area of the house radiates a touch of luxury, from the entry to bathroom spaces, set off by sumptuous materials and exquisitely crafted finishes. Elegance and subtlety are vibrating from the details. The synthesis of exquisite materials, modern and classical styles and diverse textures create distinguishable atmosphere with a sense of taste and uniqueness.

FACTS & FIGURES

Area **2 200 m²**

Number of Storeys **2**

Services **Interior Design**

Status **Completed**



The interior unveils the gift of modern luxury- living in a state of comfort and convenience, wherein every detail serves one purpose- the comfort and wellbeing of the owner. Bringing a

reinterpretation of Monet to the interior and delivering tranquil and soothing aesthetics, guarantees comfort and relaxation with a sense of persona.

AT THE CENTER OF IT ALL...

Every detail in the overall style of the interior reflects a refined design integrated with modern technologies. One of the most eye-catching design elements of this interior is the beautiful bar which is made of white Alabaster glass— illuminated from the inside—creating an unforgettable impression. With the original shapes, delicate color palette, carefully selected lighting and integration of natural materials, an ideal space for relaxation is achieved.



**FINELY CRAFTED
LUXURY**

18

DARK HUES AESTHETICS

Tbilisi, Georgia

Filled with a combination of moody colours over high-end contemporary furnishings and some special examples of statement lighting, the interior looks like secret style lairs.

Beautiful feature walls including a sophisticated mural, gorgeous nouveau flooring designs that would draw your eyes constantly to your feet, and large examples of eye catching wall art abound.



MASCULINE STYLE
WITH A SUBTLE TOUCH

INTERIORS

Mood takes priority in every corner of the interior. The harmonious interplay of materials and textures support the aim to converge strong and subtle aesthetics and create unique and harmonious environment for the residents. Meticulously selected materials, textures and earthy color pallet, each and every element of the interior ensures the creation of a comfortable and healthy environment. The DESIGN rethinks the need for privacy, relaxation and mindfulness.

FACTS & FIGURES

Area 1 500 m²

Number of Storeys 2

Services Interior Design

Status Completed



Modern, linear shapes and original elements create a comfortable and distinctive environment for the residents. The elegant, refined interior is distinguished by aesthetic and

functional solutions. The bedroom with a masculine color pallet is balanced with decorative elements. Bespoke planter adds special charm and character to the interior.

THE GIFT OF MODERN LUXURY

The interior unveils the gift of modern luxury- living in a state of comfort and convenience, wherein every detail serves one purpose: The comfort and well-being of the owner. Different decorative materials fill the ample, light-filled space to create a unique and refined environment that brides modern aesthetics with a touch of luxury.

LIVE THE EXPERIENCE

19

HOUSE WITH SOPHISTICATED STYLE

Saguramo, Georgia

An almost poetic appeal guide through the modern interior, wherein serenity is the overriding feeling at the sight. It impresses with its light and airy aesthetics, modern and welcoming atmosphere that is achieved with the use of light color pallet, natural materials, lustful furniture and decorative objects with a chic appeal. The combination of all these elements brings a luxurious atmosphere that is far from ostentatious. Instead, it is characterized by its refined and comfortable side that reigns in every room of the house, from the kitchen to the living room.



INTERIORS

Light and luxurious decor filled with top-notch materials and slick furniture are all set to impress in this elegant and classy interior. The creative gold-toned staircase railing, which separates the living room and bar area from the chimney sitting area, dining room and the kitchen are designed using custom made metal, which elevates this architectural element from something practical to a work of art. The newels, balusters, and railings of a staircase are making a real design statement and bring a sense of style to space.

FACTS & FIGURES

Area **3 100 m²**

Number of Storeys **3**

Services **Interior Design**

Status **Completed**



Our interior designers have focused their attention on the finest details and included contrasting features to create a completely unique space. The distinctive surroundings stand out

alongside the elegant marble-effect work surfaces and a monochromatic palette with quirky brass accents. The result is a triumph of practicality and persona.

DESIGNED FOR LIFE

With the aim to reinterpret traditional design standards, this apartment features the intersection of spaces, surfaces, and compositions that are functional and create a bespoke visual effect. White marble flooring, that is present from the entrance to the living room, is perfectly balanced with wooden decorative panels on the walls to bring more warmth and elegance into this minimalistic interior.

COMFORT ENRICHED
MINIMALISM

20

EXTRAVAGANCE ENRICHED APARTMENT

Krtanisi, Georgia

Designed to cater to a new generation of homeowners seeking an international-standard premium lifestyle, the interior has facilities that focus on health and pleasure. A soft and serene neutral color palette as well as a variety of stones and textures creates a deeply luxurious yet comfortable ambiance. The living space of an individual house project is tailored to the needs of the modern family with a reasonably distributed layout.



INTERIORS

The mood takes priority in every corner of the interior. The harmonious interplay of materials and textures support the aim to converge strong and subtle aesthetics and create a unique and harmonious environment for the residents. The integration of modern artworks add special spirit and character to different spaces and in combination create a living space that has its own spirit.

FACTS & FIGURES

Area **290 m²**

Number of Storeys **2**

Services **Interior Design**

Status **Completed**



Filled with a combination of moody colors over high-end contemporary furnishings and some special examples of statement lighting, the interior looks like secret-style lairs. Beautiful feature

walls including a sophisticated mural, gorgeous nouveau flooring designs that would draw your eyes constantly to your feet, and large examples of eye-catching wall art abound.

A FIRST IMPRESSION THAT LEAVES NO SECOND THOUGHTS

The way interiors influence mood and sense of well-being is at the center of our approach. These should be calm, uplifting spaces. But we bear in mind that we are creating backdrops for people's lives. We wanted to engage the owners without intruding, while delivering unexpected results.

**TIMELESS STYLE
UNDERSTATED ELEGANCE**



GET IN TOUCH

www.spectrum.ge

info@spectrum.ge

Tbilisi, Georgia, Tabukashvili St. #27, 0108

+995 555 60 32 00

SPECTRUM
CREATING HEALTHIER ENVIRONMENTS